

Hearth Cabinet[®]

VENTLESS FIREPLACES





MODERN | TRADITIONAL | CUSTOM

INDIVIDUALLY HANDCRAFTED IN BROOKLYN

HearthCabinet.com | 212.242.1485

TOP REASONS

WHY PROFESSIONALS CHOOSE

HearthCabinet®



#1: REAL, BEAUTIFUL FLAME

Our innovative gel fuel cartridges provide beautiful, golden flames that dance and crackle like a wood fire but without the smoke or mess.

#2: NO CHIMNEY, GAS, OR ELECTRICITY

Our products do not require a chimney, wood, flue, gas line, or electricity. Each unit is self-contained, allowing you to have one virtually anywhere, built-in or freestanding.

#3: SAFETY FEATURES

Our products are designed with safety in mind. Their highest-quality patented safety features are unique to HearthCabinet® and ensure consistent safe use.

#4: TRUE CUSTOM

Every HearthCabinet® is handcrafted in Brooklyn and can be custom-designed with our team to meet your project needs.

#5: PERSONAL SERVICE & PROFESSIONAL EXPERTISE

Our team of experienced professionals will work directly with you on your project, start to finish.



WHO WE ARE & WHAT WE DO

HearthCabinet® designs and handcrafts ventless fireplaces that use an **alcohol gel fuel cartridge system**. We provide a safe and elegant alternative to traditional fireplaces, adding warmth and ambiance to virtually any space.

Trusted in high-end homes, high-rise apartments, hospitality properties, and commercial spaces across North America, HearthCabinet® Ventless Fireplaces are trusted by top trade professionals. They meet the rigorous standards of UL 1370 and are the **ONLY** ventless fireplaces approved for use in New York City because of their unique safety features.

What's more? All of our ventless fireplaces are fabricated in Brooklyn, NY by seasoned craftspeople who ensure the highest quality product in both our standard and custom models and enable us to manufacture and deliver with shorter lead times.

HearthCabinet® has been the leader in luxury ventless fireplaces since 2005, and we continue to innovate to meet the changing needs of our customers.



OUR MODELS

Choose from a range of standard model options that can be custom-tailored to your project.

STANDARD

1-SIDED: HORIZON

48"W x 24"H x 11.5"D

WIDESCREEEN

42"W x 28"H x 11.5"D

PANORAMIC

42"W x 24"H x 11.5"D

TALL

36"W x 28"H x 11.5"D

LINEAR

36"W x 24"H x 11.5"D

SQUARE

31.5"W x 27.5"H x 11.5"D

SMALL

26.25"W x 24"H x 10.25"D

PREMIUM

2-SIDED: SEE-THROUGH

42"W x 30"H x 18"D / 36"W x 24"H x 18"D

CORNER

42"W x 30"H x 18"D / 36"W x 24"H x 18"D

3-SIDED: PENINSULA

36"W x 24"H x 18"D

LANDSCAPE

36"W x 24"H x 18"D

4-SIDED: QUADRANT

36"W x 24"H x 18"D



HORIZON

48" W x 24" H x 11.5" D

Model# 3060

Single Framed Design
Shown in Stainless Steel
With Curved Stainless
Steel Interior

Available in Other Finishes



WIDESCREEN

42" W x 28" H x 11.5" D

Model# 3030
Shown in Stainless Steel
With Angled Stainless
Steel Interior

Available in Other
Finishes

HOW IT WORKS

HearthCabinet® Ventless Fireplaces' beautiful, crackling flame is produced by an **alcohol gel fuel cartridge** system. They are clean-burning, eco-friendly, and do not produce smoke or odor.

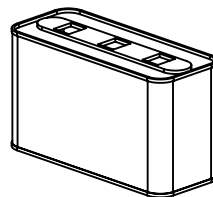
No need for a chimney, flue, gas or electricity – they are completely self-contained units. Our models are free-standing and can simply slide into your mantel or millwork. They are secured with screws through the base of the unit.

Simply unlock the door of the HearthCabinet® and place one or two cartridges inside the cartridge holder. Remove the cap and **light the gel with a long lighter**, then close and lock the door and enjoy the vibrant fireplace experience.

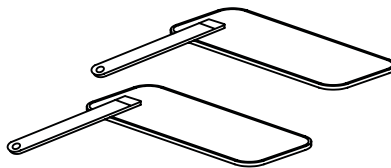
Like a log, a single cartridge will last approximately 2 hours, and can be extinguished at any time with the included snuffer plates. Since there are no gas lines or chimneys to inspect, maintain, or repair, replacing cartridges is all it takes to enjoy a HearthCabinet® Ventless Fireplace for years to come.



Lighter



Cartridge



Snuffer Plates

TRADITIONAL DESIGN



CONTEMPORARY DESIGN









PANORAMIC

42" W x 24" H x 11.5" D

Model# 806 C

Shown In Dark Bronze

With Angled Stainless Steel Interior

(OPPOSITE PAGE)

Model# 3020

Shown in Stainless Steel

With Angled Stainless Steel Interior

Available in Other Finishes





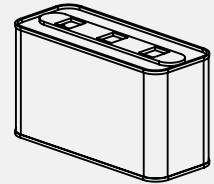




SAFETY GEL CARTRIDGE

HearthCabinet® Ventless Fireplaces' single-use, prefilled alcohol gel fuel cartridges are a far cleaner alternative to wood or gas and a much safer alternative to pourable liquid fuels.

The cartridges create crackling flames like a wood fire but with no smoke. Like logs, they last for approximately 2 hours. Simply replace the cartridges as needed.



The fuel is a mixture of virgin isopropyl alcohol (like rubbing alcohol) and water, with a small amount of gelling thickener. It is similar in composition to commonly used chafing fuels or hand sanitizer.



Cartridges come plain or scented. They are available in cases of 8, purchased online, and shipped anywhere in North America.

USE OUTDOORS

3-SIDED - LANDSCAPE

36" W x 24" H x 18" D

Model# 705

Shown in Stainless Steel

With Stainless Steel Interior

Landscape or Peninsula

Available in Other Finishes



USE INDOORS

3-SIDED - PENINSULA

36" W x 24" H x 18" D

Model# 704

Shown in Bronze

Powder-Coated Steel

With Bronze Tile Interior





PERFECT FOR ANY PROJECT

RESIDENTIAL • HOSPITALITY • COMMERCIAL

The warm, crackling fire of a HearthCabinet® Ventless Fireplace provides the perfect atmosphere for entertaining and relaxing at home.

A welcoming fireplace is also an ideal way to greet visitors to restaurants, entertainment venues, retail stores, offices, and health care facilities. Beautiful fireplaces are attention-grabbing focal points year-round.

HearthCabinet® Ventless Fireplaces save valuable square footage in multi-story residential buildings and hotels because they do not require flues. That also saves on construction costs.

Property owners, real estate developers, home owners, designers, and architects all benefit from HearthCabinet's unique safety and design features.







LINEAR

36" W x 24" H x 11.5" D

Model# 201

Shown in Iron Glimmer
Powder-Coated Steel
With Matte Black Tile Panels

Model# 201

Shown in Black
Powder-Coated Steel
With Glossy Black Tile Panels

Available in Other Finishes





PANORAMIC

42" W x 24" H x 11.5" D

Model# 2010

Shown in Black

Powder-Coated Steel

With Matte Black Tile Panels

Available in Other Finishes











TALL

36" W x 28" H x 11.5" D

Model #202

Shown in Black

Powder-Coated Steel

With Glossy Black Tile Panels

Available in Other Finishes

EASY INSTALLATION

An Easy Solution to a Difficult Problem

Installing a conventional fireplace can often be either impossible or prohibitively expensive. Wood and gas fireplaces require venting and have expensive construction requirements, but HearthCabinet® Ventless Fireplaces can be placed virtually anywhere, indoors and outdoors.

HearthCabinet® Ventless Fireplaces are completely self-contained and come fully assembled. Putting them into place is simple and only takes minutes. Secure your HearthCabinet® with just four screws into a floor, subfloor, or prepared base.

All HearthCabinets can stand alone or be built into a modern or traditional mantel or surround. HearthCabinet® Ventless Fireplaces provide great flexibility for design professionals and homeowners.



UL Standard Compliance

HearthCabinet® has a line of products that are ETL listed/certified in compliance with **UL 1370 Standard for Safety: Unvented Alcohol Fuel Burning Decorative Appliances.**

The ETL Listed Mark demonstrates compliance to the requirements of widely accepted product safety standards, as determined through independent testing and periodic inspections.



**CONFORMS TO
UL 1370**

HearthCabinet® Ventless Fireplaces are the ONLY ventless fireplaces approved for use in New York City by the NYC Fire Department and Department of Buildings because of their unique safety features, ensuring a safe experience anywhere.

SCAN THE QR CODE TO DOWNLOAD THE
APPROVALS OR GO TO
HEARTHCABINET.COM/SAFETY-APPROVALS



SAFETY, SAFETY, AND MORE SAFETY®



Unique, patented features:

- A top-hinged, locking front safety door with a rigid mesh screen prevents unintentional access to the flame by adults and children.
- Single-use, prefilled alcohol gel fuel cartridges require no pouring.
- The built-in cartridge holder prevents tipping or leaking.





TRUE CUSTOM

COLORS • DESIGNS • SIZES

HearthCabinet® Ventless Fireplaces come in a range of styles and sizes, but we can also custom-design one for any project from your drawings or ours.

A variety of metals, colors, finishes, and interior and exterior details are available to make a HearthCabinet® Ventless Fireplaces match any space or design, whether it's modern, transitional, or traditional.

RETROFITS

Old, non-functioning fireplaces don't have to stay that way. Simply inserting a HearthCabinet® Ventless Fireplace into an existing fireplace or mantel is an elegant solution that eliminates the need for costly masonry work or flue inspection and repairs.

HearthCabinet® Ventless Fireplaces can be custom-tailored to your existing fireplace or mantel dimensions.





CUSTOM ARCHED-TOP

Shown in Black
Powder-Coated Steel
With Matte Interior

Available in Other Finishes





CUSTOM TRAPEZOID

Shown in Kelly Green
Powder-Coated Steel
With Matte Interior

Available in Other Finishes









CUSTOM TALL

36" W x 28" L x 11.5" D

Shown in Fire Engine Red
With a Curved Stainless Steel
Interior

Available in Other Finishes













SQUARE

31.5" W x 27.5" H x 11.5" D

Model# 402

Shown in Stainless Steel

With Stainless Steel Angled Interior

Available in Other Finishes

HANDCRAFTED IN BROOKLYN

HearthCabinet® Ventless Fireplaces are proudly designed in Manhattan and individually handcrafted in Brooklyn. Our highly-skilled HearthCabinet® designers, technicians, and craftsmen are dedicated to producing quality products and providing excellent service. Call to schedule a showroom appointment today: 212.242.1485.

Employing local professionals and craftsmen contributes to the local economy and also allows HearthCabinet® to maintain the highest quality standards through every step of the design and fabrication process. This results in unparalleled quality and short turnaround times on all orders, standard or custom.

WE SUPPORT:







SMALL

26.25" W x 24" H x 10.25" D

Model# 103

Shown in Black

Powder-Coated Steel

With Matte Black Panels

Available in Other Finishes

PERSONAL SERVICE PROFESSIONAL EXPERTISE

HearthCabinet® provides one-on-one, personal service and design consultation from start to finish. HearthCabinet's knowledgeable staff will work with trade professionals and owners alike to make using a HearthCabinet® Ventless Fireplace a smooth and exciting process.

Call: 212.242.1485

Email: contact@hearthcabinet.com

SHOWROOMS

Our flagship showroom in Manhattan is the best place to see the range of product styles and design options in person. **Contact us for other locations.**

Location: 250 W. 26th St. 2nd Floor, NY, NY 10001

Hours: Monday - Friday, 9:30am to 6pm by Appt.

STANDARD HearthCabinet® Ventless Fireplaces: How to design and specify

The first step is planning. You can call us for help or you can utilize the QR code on the bottom right, to submit the contact form after reading through the options. Here they are:



Size - You can get different sizes. We call them Tall, Horizon, Linear, Square, and there are more.



Material - You can get the face and body of your HearthCabinet® Ventless Fireplace in a variety of materials including stainless steel, bronze, brass, colors in powder-coated steel, and more.



Interior Finish - What do you want to line the interior walls of your HearthCabinet®? Choose from a variety of finishes like glossy black tile, a brick pattern and more.



Decorative Elements - Make the inside of your fireplace truly distinctive with decorative elements like ceramic stacking logs, glass chips or riverstones.

CUSTOM HearthCabinet® Ventless Fireplaces: How to design and specify

Choosing to design a custom HearthCabinet® Ventless Fireplace with us enables you to create something truly unique. It also lets you integrate a ventless fireplace into virtually any room design. Want a fireplace with three sides? A different size? Decorative mouldings or trim? Want to fit an existing mantle? How about a unique color? It's all possible.

The HearthCabinet® design team is ready to work with you to create a special fireplace that's uniquely yours. Take a look at the options listed above for standard units, think about what, if anything, you'd like to do differently, then call us at 1-212-242-1485 or send us a message using the form below.

**SCAN THE QR CODE TO GET A QUOTE OR GO TO
[GET.HEARTHCAINET.COM/CONTACT-US](https://get.hearthcabinet.com/contact-us)**



EXTERIOR FINISH OPTIONS

STANDARD FINISHES



BLACK POWDER
COATED STEEL



STAINLESS STEEL

CUSTOM POWDER COATED FINISHES

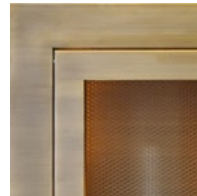


POWDER COATED
COLORS (RAL)



POWDER COATED
COLORS (PRISMATIC)

HIGH-END FINISHES



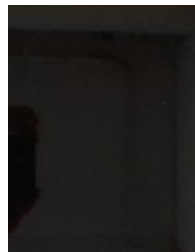
BRONZE



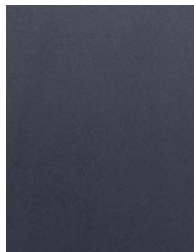
BRASS

INTERIOR FINISH OPTIONS

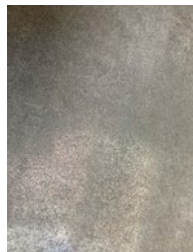
CERAMIC/PORCELAIN TILE



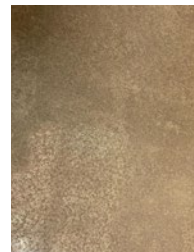
GLOSSY BLACK



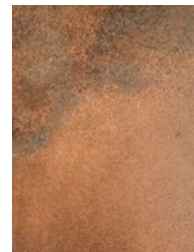
MATTE BLACK



ALUMINUM

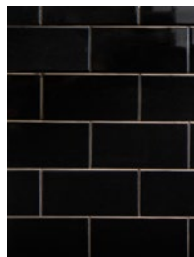


PEWTER

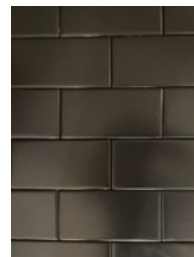


COPPER

BRICK



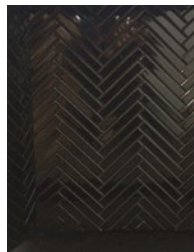
GLOSSY BLACK (3" X 6")



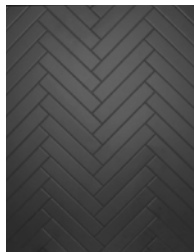
SATIN BLACK (3" X 6")

INTERIOR FINISH OPTIONS

HERRINGBONE



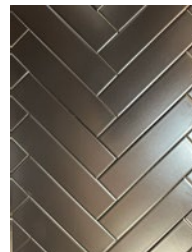
GLOSSY BLACK
(.75" X 6")



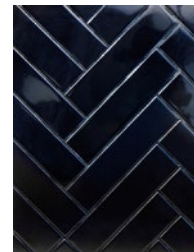
MATTE BLACK
(1" X 6")



SATIN BLACK
(3" X 6")



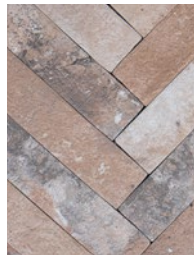
SATIN BLACK
(2" X 8")



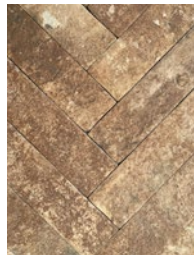
GLOSSY BLACK
(2" X 8")

TEXTURED

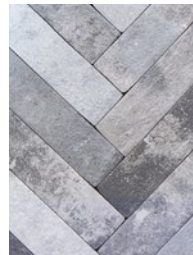
(Available in brick pattern as well)



BEIGE
(2.5" X 10")



SUNSET
(2.5" X 10")



CHARCOAL
(2.5" X 10")



BLACK
(2.5" X 10")

INTERIOR FINISH OPTIONS (Continued)

METAL PANELS

CURVED OR ANGLED



CURVED
STAINLESS STEEL



CURVED
BRASS



ANGLED
STAINLESS STEEL



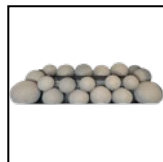
ANGLED
BRASS

DECORATIVE ELEMENT OPTIONS

CERAMIC LOGS



CERAMIC SPHERES



GLASS CHIPS & BEADS
(Additional colors available)



RIVER STONES

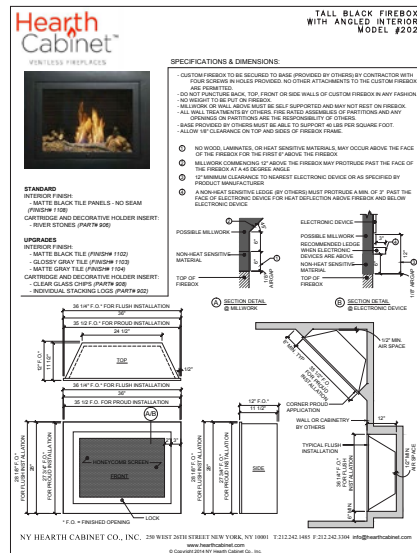


SUMMER CANDLE HOLDER



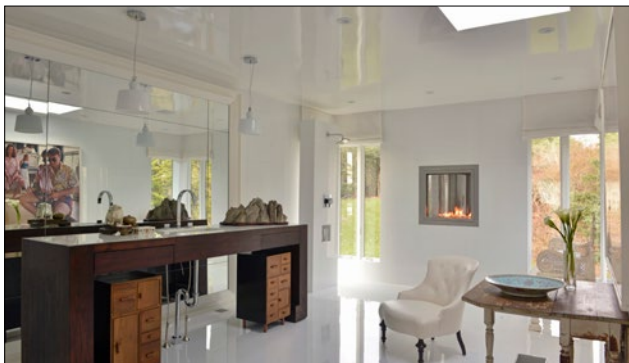
SPEC SHEETS & DRAWINGS PROVIDED FOR ALL MODELS

CONTACT OUR TEAM FOR CUSTOM DRAWINGS.



SCAN THE QR CODE TO DOWNLOAD THE
SPECIFICATION SHEETS OR GOT TO
HEARTH CABINET.COM/VENTLESS-FIREPLACES/





We have used HearthCabinet® Ventless Fireplaces in many projects so when it came time to redesign my summer home in Montauk, using a HearthCabinet® fireplace was a no brainer. Since the fireplace is ventless and doesn't require a dedicated gas line, it makes it extremely versatile to use anywhere. I installed the fireplace in the master bathroom. The fireplace is a dramatic statement piece and is functional too by bringing another layer of warmth to the bathroom or any room it's being used in. I am very happy with the service I received and the product itself. I will be specifying a HearthCabinet® fireplace again for future projects.

Vicente Wolf, Interior Designer
Vicente Wolf Associates



The HearthCabinet® sets the mood for the private dining room at the restaurant. There are always a lot of requests to be seated near it. Everyone involved with the project was really happy with the design process and customer service.

Lindsey Bonime, L. bonime design
Hospitality & Residential Designer

...We were going to miss our beautiful working fireplace when we moved from our pre-war home. Lucky for us however, while visiting a friend, we discovered a beautiful, cleaner and more convenient alternative, HearthCabinet®!

S.C. - Residential Client

I have had the pleasure of working with Antonio at HearthCabinet on two luxury design projects in NY. The product was perfect for my client's needs and fit perfectly into my design concepts. The customer service was top notch and timely. I can highly recommend the HearthCabinet Fireplace.



Amy Spiegel, Designer
Amy Spiegel interiors

We are constantly impressed with the team at HearthCabinet®. Not only do they have a great eye, they are a joy to work with. Can't be beat!

Challie Stillman, Design Director
Resource Furniture - Custom, Designer Furniture

Read other testimonials at: [HearthCabinet.com/testimonials](https://www.hearthcabinet.com/testimonials)

Many homes in southern California...

HearthCabinet® Ventless Fireplaces provides a practical solution... I can say without a doubt that this product is not only gorgeous but also practical and efficient. It's sheer flexibility makes it suitable for a variety of design projects... We look forward to continuing to work with such an amazing product for years to come!

Annika Sandberg, Interior Designer
Hospitality! LA Design Mart

HearthCabinet® has been a fantastic resource for us. Many of our clients want fireplaces but could never have a vented unit and HC is the safest ventless fireplace on the market. We use them all the time and will continue to do so.

Mike House, Architect
Raad Studio

HearthCabinet® provides a superior product... and (they) have made it into many of the most discriminating buildings in Manhattan and beyond. Perhaps more importantly, all their products are customizable and their sales and install teams are easy to work with. We have collaborated with them on many projects; I can recommend them without reservation.

Katherine Perino, Business Development Manager
Chesney's Crafter and Designer

PHOTO CREDITS

Page

- Cover Butter And Eggs Interiors | Werner Straube Photography
2. The NY Edition Hotel, New York, NY | Project by Ian Schrager & The Rockwell Group
4. Designer: Kristina LoMonaco, kristinalomonaco.com
Photographer: Patrick Cline, patrickclinephotography.com
5. Featured in the home of designer Amir Khamneipur
7. Project by HearthCabinet® Ventless Fireplaces
8. Project by Resource Furniture
- 10 Designer: Eddie Lee Inc. (Left)
Architect: Rise Projects | Photographer: Ellen McDermott (Right)
11. Project by Creative Designs by Sofia
12. Project by Greg Colston Design | Artwork by Sunyoo Lee
13. Architect: David Mansfield Architecture and Design | Designer: Pappas Miron Design
Contractor: Signature Design and Constructions | Photographer: Brett Beyer
14. Designer: OAD Interiors | Project Contractor: NYC Professional Millwork
15. Construction: All Construction & Design | Photographer: Marco Ricca
Interior Design by Sissy & Marley
18. Project by HearthCabinet® Ventless Fireplaces
19. Project by Marie Aiello Design Studio | and TODO Design & Architecture
20. The Brooklyn - A Hotel, Brooklyn, NY | Project by Expressive Lighting
21. Tavern on the Green, NYC | Contractor: Norco Construction Inc.
Owners: Jim Caiola and David Salama | Architect: Richard Lewis Architects (Top)
The Convene Conference Center, New York, NY (Bottom)
22. Designer: Michael Wood & Co. | Photographer: Allyson Lubow

PHOTO CREDITS

Page

23. Developer: Eckstrom NYC
24. Project by Reade Street Studio & Sage Builders Corp
25. Project by Robin Baron Design | Photo by Robert Karosis Photography
26. Architect: Rachel Frankel Architecture | Contractor: Carpistry Construction
27. Designer: Andrea Kaplan
28. Project by Campion Platt
30. Project by Ken Siegel Architects
32. Project by Leila Satow Architect | Douglas Graneto Design
33. Architect: O'Neil Langan Architects, P.C. (Top)
Project by Jennifer Flanders Inc. | MJL Design & Development Group LLC (Bottom)
34. Silverstein Properties | A+I Architecture Plus Information | SAA Architects | JRM
Construction Management | Patrick Rogers Studios Photography
35. Project by LB Architects and JE Fitzgerald
36. YOTEL New York | Architect: Ismael Leyva Architects | Owner: Related
37. Tracy Morris Design and Greg Powers Photography
38. Contractor: In House Group Inc.
39. Hyatt Place Santa Cruz, CA | Project by William Bagnall Architects
AK Design Studio, and Hogan & Pinckney
40. Project by Rick Trabucco - Home at Last
41. Designer: Stephens Design Group
42. Designer: Bonnie Fox Design | Architect: Jonathan Held Architect
44. Michal Mufson Design @mufsondesign

MEMORIES
ARE MADE AROUND
FIREPLACES
-NOT-
CHIMNEYS



@HearthCabinet

New York | Beverly Hills | Dallas | Great Barrington | Los Angeles | Merrillville |
Millburn | Red Bank | Southampton | Washington D.C

HearthCabinet.com | 212.242.1485 | Contact@hearthcabinet.com

250 West 26th Street, 2nd Floor, New York, NY 10001



CONFORMS TO
UL 1370